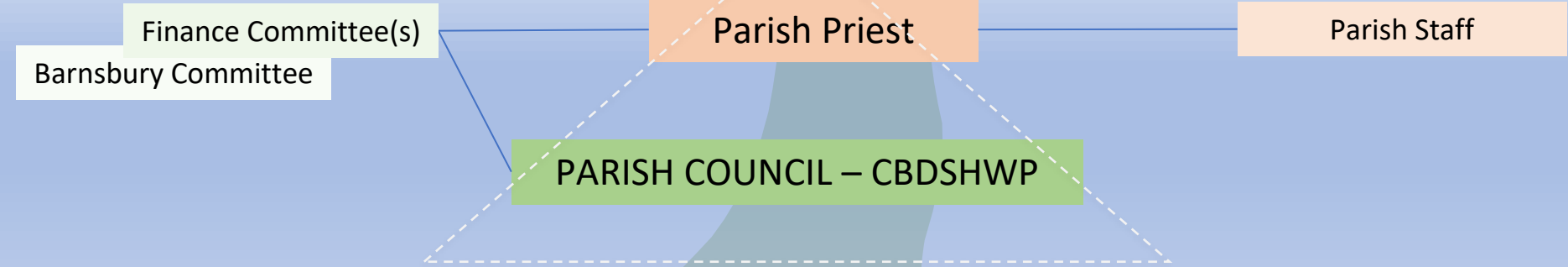


CBDSHWP Parish Model

God's activity in the world is not just for those called into the Church but for all human beings, and indeed for the whole of creation

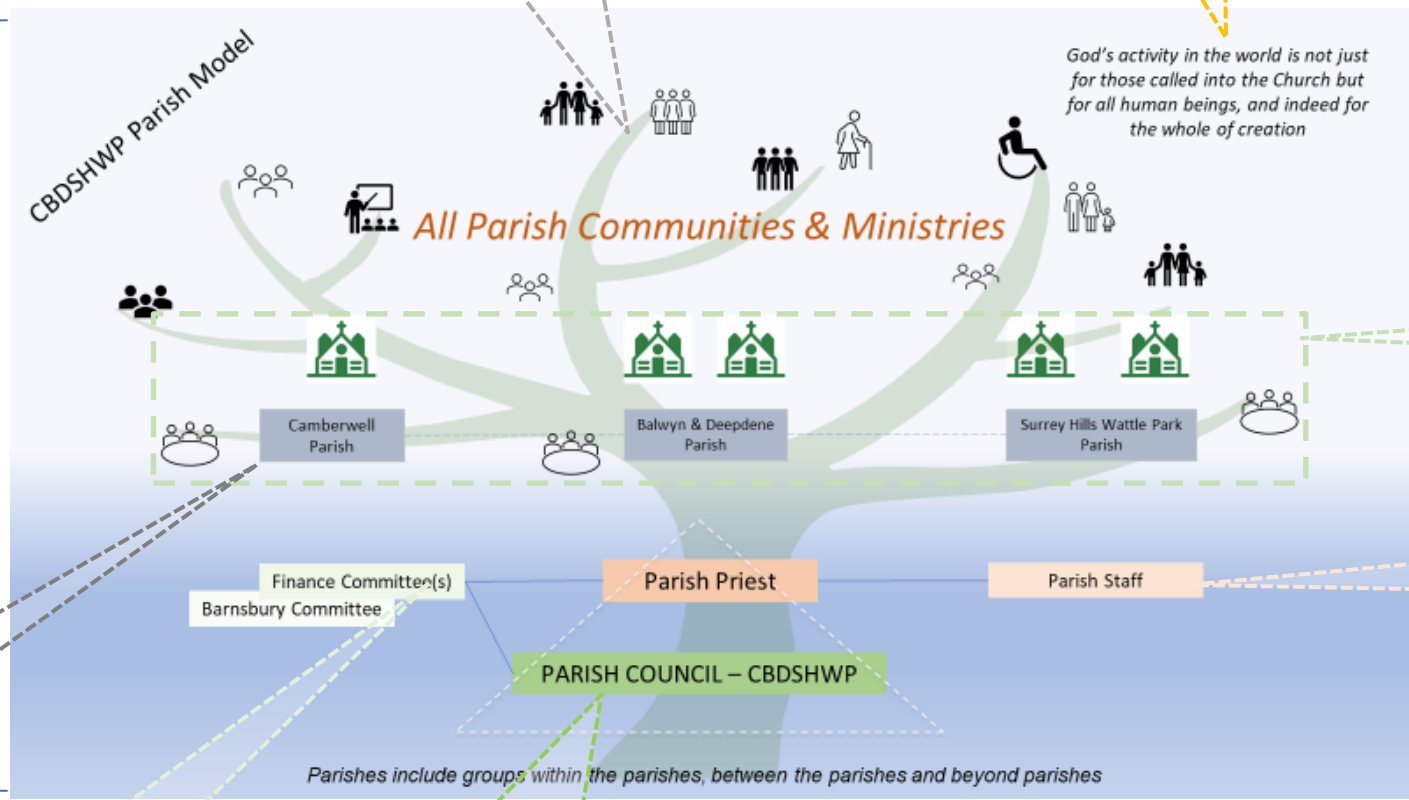
All Parish Communities & Ministries



Parishes include groups within the parishes, between the parishes and beyond parishes

The Tree of Life is used as backdrop for the Parish Model – as a symbol of God’s life-giving presence and the fullness of eternal life available in God.

Gathering the People of God by Fr. Frank O’Loughlin



The Tree of Life embodies all people of the parishes, including people who do not yet believe in Christ and those disenfranchised.

Partnership of three parishes (five churches & three schools)

The three parishes are served by a staff group which works with the Parish Priest and Assistant Priest

New ministry of Parish Life Teams in each of our parish churches (five teams)

The structure of the Finance Committees is still to be decided

One Parish Council, the overall governing body, advising the Parish Priest on the Strategic directions and mission of the parishes